



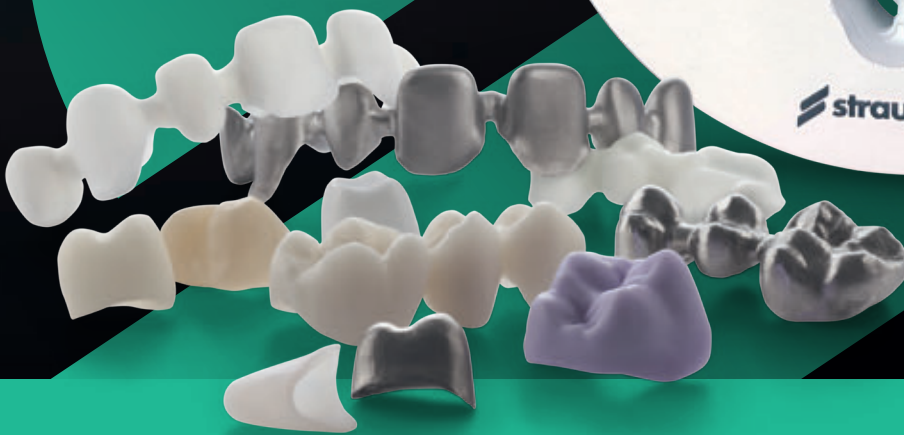
Centralized  
milling

In-house  
milling

 **straumann**

# MILLING MATERIALS

A leading offering.



Data  
Acquisition

Planning

Surgery

Impression

Design

Production

Post  
Processing

Final  
Restoration

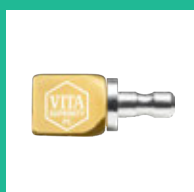
Product information

# AVAILABLE MATERIALS

## GLASS-CERAMICS



n!ce® Glass-Ceramic



VITA® Suprinity



VITABLOCS®  
Mark II



VITABLOCS®  
TriLux Forte

## HYBRIDS



VITA® Enamic

## POLYMERS



VITA® CAD-Temp

## METALS\*



Pre-milled  
Abutment Blanks

For more information on the materials,  
please consult the respective material sheet

# MILLING MATERIALS FOR DENTISTS



In-house  
milling

A tailored material offering dedicated to efficient chairside milling workflows.

## AVAILABLE INDICATIONS

### TOOTH-BASED

---



Inlay/onlay/  
partial crown



Veneer



Telescopic  
crown



Vestibular  
veneering



Coping



Full-contour  
crown



Bridge/bar  
framework



Full-contour  
bridge

### ABUTMENT-BASED

---



Coping



Full-contour  
crown

### IMPLANT-BASED\*\*

---



Abutment



Anatomically  
reduced abutment

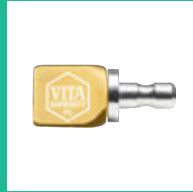
\*\* For Metals only

# AVAILABLE MATERIALS

## GLASS-CERAMICS



n!ce® Glass-Ceramic



VITA® Suprinity



VITABLOCS® Mark II



VITABLOCS® TriLuxe Forte

## HYBRIDS



VITA® Enamic

## CERAMICS



n!ce® Zirconia<sup>LT</sup>



n!ce® Zirconia<sup>HT</sup>



n!ce® Zirconia<sup>XT</sup>



n!ce® Zirconia<sup>GT</sup>

## METALS\*



Pre-milled Abutment Blanks

## POLYMERS



JUVORA™ PEEK



VITA® CAD-Temp



PMMA



Splint, Cast & Wax

For more information on the materials, please consult the respective material sheet

# MILLING MATERIALS FOR DENTAL LABS



In-house  
milling

A tailored material offering dedicated to efficient lab milling workflows.

## AVAILABLE INDICATIONS

### TOOTH-BASED

---



Inlay/onlay/  
partial crown



Veneer



Telescopic  
crown



Vestibular  
veneering



Coping



Full-contour  
crown



Bridge/bar  
framework



Full-contour  
bridge

### ABUTMENT-BASED

---



Coping



Full-contour  
crown



Bridge/bar  
framework



Full-contour  
bridge

### IMPLANT-BASED\*\*

---



Abutment



Anatomically  
reduced abutment

\*\* For Metals only

# AVAILABLE MATERIALS

## GLASS-CERAMICS



n!ce® Glass-Ceramic



IPS e.max® CAD

## CERAMICS



n!ce® Zirconia<sup>LT</sup>



n!ce® Zirconia<sup>HT</sup>



n!ce® Zirconia<sup>XT</sup>



n!ce® Zirconia<sup>GT</sup>



Zirconia for Custom Abutments

## POLYMERS



JUVORA™ PEEK

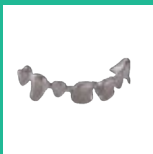


VITA® CAD-Temp



n!ce® PMMA

## METALS



n!ce® Cobalt-Chromium



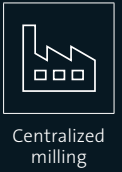
n!ce® Titanium



Titanium and TAN for Custom Abutments

For more information on the materials, please consult the respective material sheet

# CENTRALIZED MILLING MATERIALS



A tailored material offering dedicated to efficient centralized milling workflows.

## AVAILABLE INDICATIONS

### TOOTH-BASED



Inlay /onlay/  
partial crown



Veneer



Partial crown



Vestibular  
veneering



Coping



Full-contour  
crown



Bridge/bar  
framework



Full-contour  
bridge

### ABUTMENT-BASED



Coping



Full-contour  
crown



Bridge/bar  
framework



Full-contour  
bridge

### IMPLANT-BASED



Abutment\*



Anatomically  
reduced abutment\*



Bridge/bar  
framework\*\*



Anatomically  
reduced bridge\*\*

\* For Zirconia and Metals only  
\*\* For Metals only

Straumann offers a unique portfolio of materials providing an unparalleled range of treatment options. All workflows and material classes are covered, providing high versatility and giving you the choice of material to restore your patients.



## VERSATILITY

The Straumann® Milling Materials Portfolio embraces the entire variety of dental materials, indications and workflows providing solutions to all dental professionals



## QUALITY

The materials are carefully selected, verified and validated to guarantee high quality from the blank to the milled restoration ensuring predictable prosthetic outcome

### International Headquarters

Institut Straumann AG  
Peter Merian-Weg 12  
CH-4002 Basel, Switzerland  
Phone +41 (0)61 965 11 11  
Fax +41 (0)61 965 11 01  
[www.straumann.com](http://www.straumann.com)

VITA® is a registered trademark of VITA Zahnfabrik H. Rauter GmbH & Co. KG, Germany.  
JUVORA™ is a trademark of JUVORA Ltd.  
IPS e.max® is a registered trademark of Ivoclar Vivadent AG, Liechtenstein.

© Institut Straumann AG, 2023. All rights reserved.  
Straumann® and/or other trademarks and logos from Straumann® mentioned herein are the trademarks or registered trademarks of Straumann Holding AG and/or its affiliates.

