

# STRAUMANN® FULL-ARCH SOLUTIONS

Because we are all unique.



# PATIENT-CENTRIC APPROACH

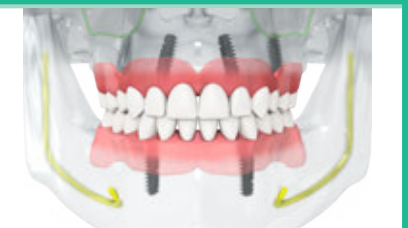
Millions of people suffer from dental problems, yet no two cases are alike. Having the right solution for each individual patient is a challenge every clinician faces.

Straumann® full-arch solutions offer a comprehensive portfolio designed to meet the needs of diverse patient groups and help you treat more patients.

## Straumann® full-arch removable solutions



Straumann® Mini Implant System



Straumann® Novaloc® Retentive System



An immediate restoration\* solution for patients with reduced horizontal bone, combining the proven strength of Roxolid® with the durable Optiloc® retention system, featuring ADLC-coated components and PEEK inserts.<sup>1</sup>



A durable and cost-effective restoration, featuring ADLC-coated abutments for excellent wear resistance<sup>1</sup> and the ability to accommodate implant angulations of up to 60°.

\* if primary stability is reached

## Straumann UNIQ™ removable restorations

### Bars



Removable bar



Milled bar

For more information about Straumann® Full-Arch Solutions visit our website.





**Straumann® full-arch fixed solutions**

<p><b>LOCATOR FIXED® Attachment System for Straumann®</b></p>	<p><b>Straumann Pro Arch™ with BLC, TLC, BLX and TLX implants</b></p>	<p><b>Straumann® Zygomatic implant</b></p>
<p>An affordable, truly fixed solution built on the proven LOCATOR® abutment system, leveraging familiar removable prosthetic concepts and workflows.</p>	<p>Straumann® tapered implants designed to provide primary stability<sup>2</sup> and optional implant tilting to avoid extensive bone grafting.</p>	<p>Two implant designs to suit the patient's anatomy and bone deficit. Compatible with the Straumann BLX™, Straumann BLC™ and Straumann BLT™ prosthetic portfolio.</p>

**Straumann UNIQ™ screw-retained restorations (For more options contact Straumann sales representative)**

Bridges

<p>Basic/advanced hybrid</p>	<p>Ti/CoCr Bridge</p>	<p>ZrO<sub>2</sub>/PEEK/PMMA Bridge</p>
------------------------------	-----------------------	---



# TAILORED TO FIT.

Additional tools and services for the immediate full-arch restoration.



For more information about Straumann digital ecosystem solutions, visit Straumann AXS™



## CODIAGNOSTIX® TREATMENT PLANNING

coDiagnostiX®, a digital implant placement planning tool, enables you to plan full-arch cases precisely and easily. The tool offers numerous measurement and planning functions, including nerve canal detection and teeth extraction.

## SMILE IN A BOX® SERVICE

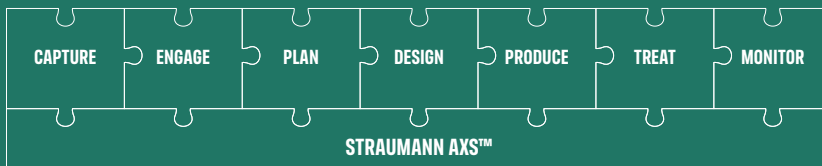
Smile in a Box® – a digital, modular, integrated treatment planning and manufacturing service. The clinician can select the services he or she wants, and Straumann delivers everything needed for the treatment in one box.

## STRAUMANN UNIQ™ CUSTOM PROSTHETICS

Premium on demand services help labs outsource the manufacturing of a full range of full-arch custom implant prosthetics. Scanning and design can also be added for full flexibility.

## STRAUMANN® INTEGRATED DIGITAL ECOSYSTEM – POWERED BY Straumann AXS™.

The Straumann® Integrated Digital Ecosystem is a growing network of digital solutions, connected and accessible through the Straumann AXS™ platform. It maximizes the benefits of digital tools, by seamlessly integrating data, software and services, enhancing user experience and efficiency.



## REFERENCES

1 Straumann records on file 2 Eckert SE, Hueler G, Sandler N, Elkattah R, McNeil DC. Immediately Loaded Fixed Full-Arch Implant-Retained Prosthesis: Clinical Analysis When Using a Moderate Insertion Torque. Int J Oral Maxillofac Implants. 2019 Jan 31. 3 Calvo-Guirado JL, Lopez Torres JA, Dard M, Javed F, Perez-Albacete Martinez C, Mate Sanchez de Val JE. Evaluation of extrashort 4-mm implants in mandibular Full-Arch patients with reduced bone height in comparison with standard implants: a 12 month results. Clin Oral Impl Res 27, 2016, 867-874.

## International Headquarters

Institut Straumann AG  
Peter Merian-Weg 12  
CH-4002 Basel, Switzerland  
Phone +41 (0)61 965 11 11  
Fax +41 (0)61 965 11 01  
www.straumann.com

LOCATOR® and LOCATOR FIXED® are registered trademarks of Zest IP Holdings LLC, USA.

© Institut Straumann AG, 2025. All rights reserved.  
Straumann® and/or other trademarks and logos from Straumann® mentioned herein are the trademarks or registered trademarks of Straumann Holding AG and/or its affiliates.

