

straumann® Pro
Arch



More than a fixed
rehabilitation.
A reason to smile.



In combination with:



 **straumann**
simply doing more

Patient expectations drive dental treatments for fixed edentulous immediate restorations.

Patients today have elaborate expectations about dental restorations; they demand natural looking rehabilitations that come with minimal effort.



INCREASED QUALITY OF LIFE

Patient profiles are changing: the new generation of 65+ actually claims to feel 10 years younger. They want to enjoy life, food and social life. Expecting to make no compromises on those qualities, patients look for:

- A fixed prosthesis that's comfortable to wear
- Predictability and reliability even in challenging clinical cases



INCREASED ESTHETIC AWARENESS

For 72% of patients¹ it is very or extremely important that their restoration guarantees an esthetic result:

- Attractive appearance with natural looking teeth
- Getting back teeth within a short period of time



TREATMENT OPTION WITH MINIMAL COMPLEXITY

Patients are looking for less demanding procedures:

- Less invasive treatment with minimal discomfort
- Affordable treatment with a high-quality outcome

Now available:

The new option within your edentulous treatment portfolio.

Providing fixed restorations for edentulous patients is a complex procedure, and you need to consider several clinical as well as individual aspects. Within the existing Straumann product portfolio, you can now choose from several prosthetic treatment options to help edentulous patients^{2,3}:

		Straightforward		Advanced		Complex	
		Removable		Fixed			
Maxilla			 LOCATOR® on 4 implants	 Fixed screw-retained restoration on 4 implants, posterior-tilted avoiding sinus	 Fixed screw-retained restoration on 6 implants		
				 Fixed screw-retained restoration on 4 implants, posterior-tilted avoiding sinus	 Fixed screw-retained restoration on 6 implants		
Mandible		 LOCATOR® on 2 implants	 Bar with pre-fabricated/individualized parts on >3 implants	 Fixed screw-retained restoration on 4 implants, posterior-tilted avoiding mandibular nerve	 Fixed screw-retained restoration on >6 implants		
				 Fixed screw-retained restoration on 4 implants, posterior-tilted avoiding mandibular nerve	 Fixed screw-retained restoration on >6 implants		

When treating edentulous cases, removable options represent a more straightforward approach, whereas a fixed option with 4 or more implants (straight or tilted) represents a more advanced approach.

To address the requirements and expectations of patients seeking fast, convenient and reliable solutions for full dental replacement, Dr. Paolo Malo from MALO CLINIC® developed a special treatment concept in the early 1990's called the MALO CLINIC® Protocol. The protocol offers immediate temporary restorations for edentulous patients despite limited bone availability.

Straumann® Pro Arch.

Responding to patient expectations.

Respecting individual patients' needs and expectations, the new Straumann® Pro Arch offers dental professionals the opportunity to provide fixed full-arch treatments with an immediate temporary restoration.

Reduced complexity by addressing the individual anatomical situation and leveraging the unique Roxolid® material

- Preserves bone and reduces invasive grafting procedures^{4,5}
- More treatment options with smaller implants

Predictability even in challenging cases thanks to the SLActive® surface

- Higher treatment predictability in challenging protocols^{4,6-10}
- Broadens treatment potentials for all your patients¹¹⁻¹⁸

Time-saving treatment with the option for immediate temporization

- Safer and faster treatment in 3–4 weeks for all indications¹⁹⁻²⁸
- Comprehensive portfolio for immediate temporization

Increased efficiency with new prosthetic portfolio

- Prosthetic flexibility due to smaller abutment dimensions and different angulations²⁹
- Custom-milled bar designs as a framework for final fixed bridges
- **NEW:** also available in 3M™ Espe™ Lava™ Plus zirconia material

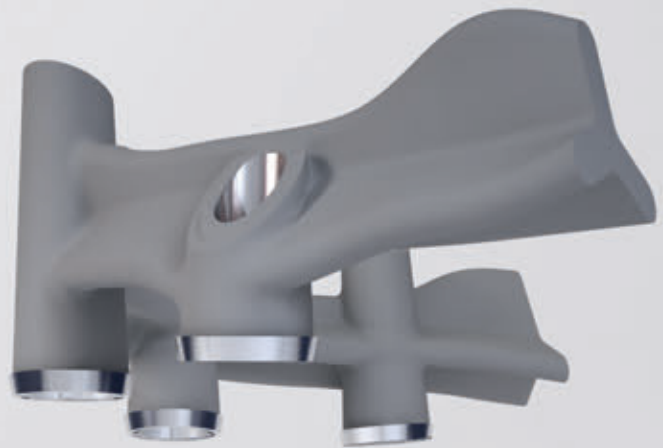


More prosthetic options for esthetic and efficient restorations.

The new Straumann® Bone Level Tapered Implant provides an optimized choice for implant treatment. It provides a unique combination of mechanics and biology for ease of use and enhanced primary stability. The unique Roxolid® material has been specifically designed for dental implantology and delivers outstanding mechanical results. Combined with the SLActive® surface, Straumann delivers an excellent implant system with outstanding osseointegration and healing properties.

The Straumann prosthetic portfolio provides a high level of flexibility to choose the best solution for the patient:

- with its sleek design the Straumann® Screw-retained Abutment portfolio allows overcoming implant angulations
- the improved CARES® offering for final restorations provides a wide range of designs and materials



Straumann® Screw-retained Abutment

- Same connector design for all diameters allows for a streamlined portfolio of tertiary components
- Abutment angulations of 17° and 30°
- Different gingiva heights of 1 mm, 2.5 mm, 4 mm and 5.5 mm
- Simplified handling with CrossFit® connection



Straumann® CARES® Screw-retained Bars and Bridges

- Custom-milled frameworks for final restoration
- Multiple bar and bridge designs available
- Bars and bridges for abutment level or implant level
- **NEW:** also available in 3M™ Espe™ Lava™ Plus zirconia material

new



The new Straumann® Bone Level Tapered Implant



Roxolid®

Roxolid® – Reducing invasiveness with smaller implants

- More treatment options with smaller implants
- Preserves bone and reduces invasive grafting procedures^{4,5}
- Increased patient acceptance with less invasive procedures³⁰



SLActive®

SLActive® – Designed to maximize your treatment success and predictability

- Higher treatment predictability in challenging protocols⁴⁻¹⁰
- Broadens treatment potentials for all your patients¹¹⁻¹⁸
- Safer and faster treatment in 3–4 weeks for all indications¹⁹⁻²⁸

Apically tapered – Excellent primary stability even in compromised bone situations

- Full-depth thread to apex for early engagement
- Self-cutting in underprepared sites
- Protecting anatomical structure with round tip

Less complex: Fixed edentulous treatment procedures with Straumann components.

THIS CLINICAL CASE REPRESENTS A POSSIBLE WAY OF PROVIDING A SCREW-RETAINED FULL-ARCH RESTORATION. IMAGES COURTESY OF DR. RUNYON AND DR. RALSTIN, LAB WORK BY DARREL CLARK, CDT, FORT WORTH, TEXAS, USA

Initial situation: A female patient presented at the dental office with a problematic screw-retained bridge restoration in the anterior maxilla. Based on her dental history it was decided to go for a fixed restoration on 4 implants and an immediate temporary prosthesis.



Pre-operative situation



Flap and extraction of maxillary teeth



Titanium Temporary Copings, non-engaging, placed intra-orally, facial view



Block-out technique to protect screw channels of the Temporary Copings, acrylic guide used to verify position of abutments and Occlusal-Screw channel



Blu-Mousse® application to identify the emergence of the Temporary Copings as well as preparation for pick up



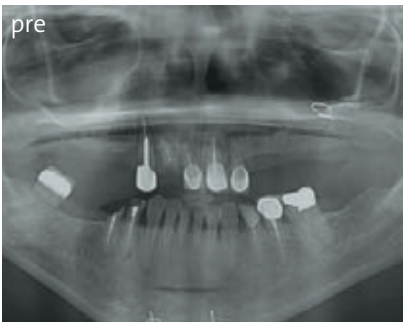
Acrylic-material intra-oral pick up



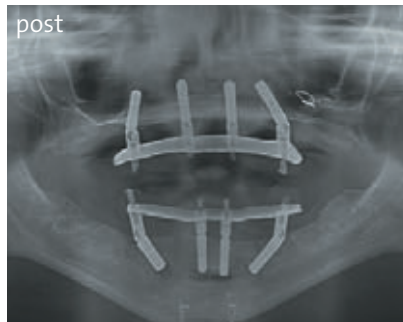
7
Interim fixed bridge, post-operative, facial view: note buccal flange extension, adaptation to maxillary ridge, and relation to mandibular natural dentition



8
4 months later, the final fixed bridge is delivered to the patient



pre
Pre-operative situation



post
Post-operative situation

SOURCES

1 Riegl Survey Patient Satisfaction, Europe, September 2011, How important are attractive teeth to patients? 2 based on Dawson A et al.: The SAC Classification in Implant Dentistry, ITI 2009, Classification of Restorative Cases, Edentulous Maxilla/Mandible 3 In general maxillary implant-supported/retained overdentures are considered advanced restorations 4 Benic GI, Gallucci GO, Mokti M, Hämmerle CH, Weber HP, Jung RE. Titanium-zirconium narrow-diameter versus titanium regular-diameter implants for anterior and premolar single crowns: 1-year results of a randomized controlled clinical study. *Journal of Clinical Periodontology* 2013; [Epub ahead of print] 5 Freiberger I et al.: Non-Interventional Study on Success and Survival of TiZr Implants. European Association of Osseointegration 20th Annual Scientific Meeting, Copenhagen, Denmark, October 2012: Poster presentation. Other Source: Data base Non-interventional study, data on file. 6 Schwarz, F., et al., Bone regeneration in dehiscence-type defects at chemically modified (SLActive®) and conventional SLA® titanium implants: a pilot study in dogs. *J Clin.Periodontol.* 34.1 (2007): 78–86 7 Lai HC, Zhuang LF, Zhang ZY, Wieland M, Liu X. Bone apposition around two different sandblasted, large-grit and acid-etched implant surfaces at sites with coronal circumferential defects: An experimental study in dogs. *Clin. Oral Impl. Res.* 2009;20(3):247–53. 8 Buser D, Wittneben J, Bornstein MM, Grütter L, Chappuis V, Belser UC. Stability of Contour Augmentation and Esthetic Outcomes of Implant-Supported Single Crowns in the Esthetic Zone: 3-Year Result of a Prospective Study With Early Implant Placement Post Extraction. *J Periodontol.* 2011 March; 82(3): 342-9. 9 Buser D, Chappuis V, Kuchler U, Bornstein MM, Wittneben JG, Buser R, Cavusoglu Y, Belser UC. Long-term Stability of Early Implant Placement with Contour Augmentation. *J Dent Res.* 2013 Dec;92(12 Suppl):1765-82S. 10 Nicolau P, Reis R, Guerra F, Rocha S, Tondela J, Brägger U. Immediate and early loading of Straumann® SLActive implants: A Five Year Follow-up. Presented at the 19th Annual Scientific Meeting of the European Association of Osseointegration – 6-9 October 2010, Glasgow 11 International Diabetes Federation. <http://www.idf.org/diabetesatlas/> 12 Schlegel KA, Prechtel C, Möst T, Seidl C, Lutz R, von Wilmowsky C. Osseointegration of SLActive® implants in diabetic pigs *Clin Oral Implants Res.* 2013 Feb;24 (2):128-34. 13 Reginster JY, Bulet N. Osteoporosis: a still increasing prevalence. *Bone.* 2006 Feb;38(2 Suppl 1):S4-9. 14 Mardas N, Schwarz F, Petrie A, Hakimi AR, Donos N. The effect of SLActive® surface in guided bone formation in osteoporotic-like conditions *Clin Oral Implants Res.* 2011 Apr;22(4):406-15. 15 WHO: <http://www.who.int/ageing/about/facts/en/index.html> 16 iData Report , Dental Implants and Final Abutments, Europe 2012 17 iData Report , Dental Implants and Final Abutments, USA 2012 18 Slotte Christer et al, Four-mm implants supporting fixed partial dentures in the posterior mandible. 5-year results from a multicenter study. Presented at the 20th Annual Scientific Meeting of the European Association of Osseointegration, 10-13 October 2012, Copenhagen, Denmark. 19 from single-tooth to edentulous 20 Rupp F, Scheideler L, Olshanska N, de Wild M, Wieland M, Geis-Gerstorfer J. Enhancing surface free energy and hydrophilicity through chemical modification of microstructured titanium implant surfaces. *Journal of Biomedical Materials Research A*, 76(2):323-334, 2006. 21 De Wild M. Superhydrophilic SLActive® implants. Straumann document 151.52, 2005 22 Katharina Maniura. Laboratory for Materials – Biology Interactions Empa, St. Gallen, Switzerland Protein and blood adsorption on Ti and TiZr implants as a model for osseointegration. EAO 22nd Annual Scientific Meeting, October 17 – 19 2013, Dublin 23 Schwarz, F., et al., Bone regeneration in dehiscence-type defects at non-submerged and submerged chemically modified (SLActive®) and conventional SLA® titanium implants: an immunohistochemical study in dogs. *J Clin.Periodontol.* 35.1 (2008): 64–75. 24 Rausch-fan X, Qu Z, Wieland M, Matejka M, Schedle A. Differentiation and cytokine synthesis of human alveolar osteoblasts compared to osteoblast-like cells (MG63) in response to titanium surfaces. *Dental Materials* 2008 Jan;24(1):102-10. Epub 2007 Apr 27. 25 Schwarz F, Herten M, Sager M, Wieland M, Dard M, Becker J. Histological and immunohistochemical analysis of initial and early osseous integration at chemically modified and conventional SLA® titanium implants: Preliminary results of a pilot study in dogs. *Clinical Oral Implants Research*, 11(4): 481-488, 2007. 26 Lang, N.P., et al., Early osseointegration to hydrophilic and hydrophobic implant surfaces in humans. *Clin Oral Implants.Res* 22.4 (2011): 349–56. 27 Raghavendra S, Wood MC, Taylor TD. *Int. J. Oral Maxillofac. Implants.* 2005 May–Jun;20(3):425–31. 28 Oates TW, Valderrama P, Bischof M, Nedir R, Jones A, Simpson J, Toutenburg H, Cochran DL. Enhanced implant stability with a chemically modified SLA® surface: a randomized pilot study. *Int. J. Oral Maxillofac. Implants.* 2007;22(5):755–760. 29 Compared to existing Straumann® Multi-base portfolio 30 If a GBR procedure can be avoided

International Headquarters

Institut Straumann AG

Peter Merian-Weg 12

CH-4002 Basel, Switzerland

Phone +41 (0)61 965 11 11

Fax +41 (0)61 965 11 01

www.straumann.com

Blu-Mousse® is a registered trademark of Parkell, Inc, USA.

MALO CLINIC® is a registered trademark of Malo Clinic, LD, Portugal.

© Institut Straumann AG, 2015.

Straumann® and/or other trademarks and logos from Straumann® mentioned herein are the trademarks or registered trademarks of Straumann Holding AG and/or its affiliates. All rights reserved.