

9. Use of Axiom® TL (Tissue Level) implant in a case of “Full Arch”

Case study

A **58-year-old** patient, a former smoker who had to stop smoking due to heart disease. He was diagnosed with bimaxillary chronic periodontitis. The patient would like to have permanent teeth.

Following periodontal treatment and follow-up, all teeth are extracted and immediate implantation of 8 implants in the maxilla and 6 Axiom® TL (Tissue Level) implants in the mandible is planned in two stages, to allow for proprioception.

The maxillary will be treated first. A temporary bridge will be placed, then the lower teeth will be extracted and the implants placed immediately.



Dr David NORRÉ

- Graduated in 2001 from Leuven Catholic University (KUL, Belgium)
- Postgraduate Course in Restorative Dentistry, KUL, Dept. Prof Ignace Naert: 2001 – 2005
- DUI (postgraduate diploma) in Oral Surgery and Implantology, Liège University (B) dept. Prof Eric Rompen 2006 - 2008
- Lecturer at Catholic University Leuven (KUL) and for Institute of Osseointegration
- Multidisciplinary practice in Overijse, in Tervuren and Antwerpen

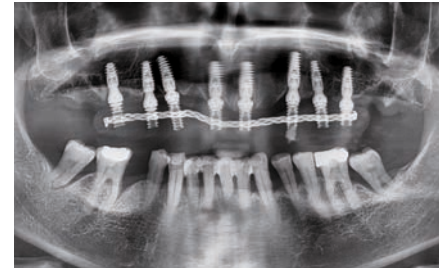


Mr Jan DONCK

Codenta dental lab



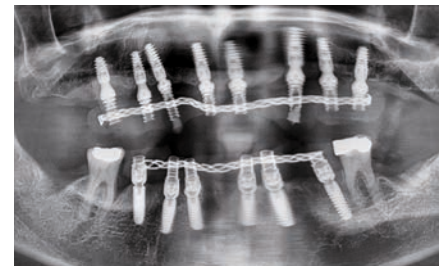
1. Pre-operative situation.



2. Panoramic X-ray with the maxillary temporary bridge.



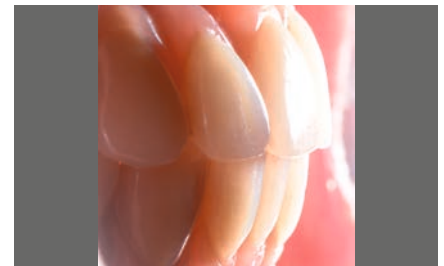
6. Mandibular impression.



7. Panoramic X-ray with the two temporary bridges.



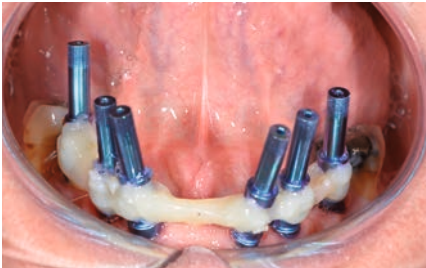
11. Permanent prostheses.



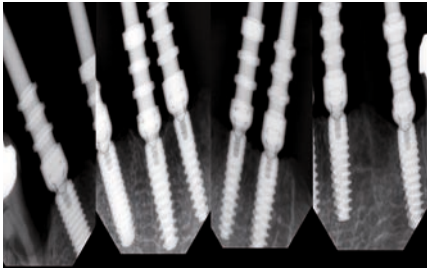
12.13.14. Clinical intrabuccal view of the final prostheses.



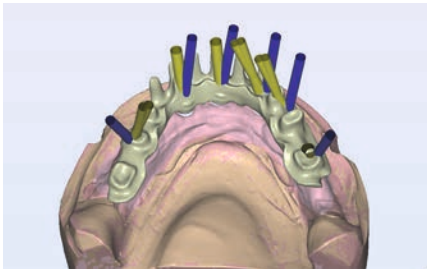
3. Situation of Axiom® TL (Tissue Level) mandibular implants - 6 months after surgery.



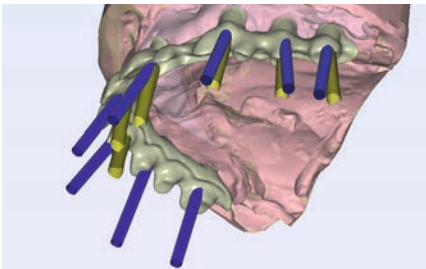
4. Solidification of mandibular impression transfers.



5. Retroalveolar X-rays with transfers in place in the mandible.



8. CAD concept image of the Simeda® mandibular frame: the screw channels in yellow and the implant axes in blue show the angulation of the screw channels.



9. CAD concept image of the Simeda® maxillary frame: the screw channels in yellow and the implant axes in blue show the angulation of the screw channels.



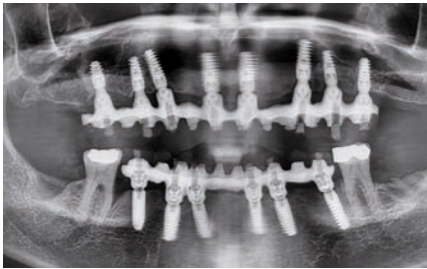
10. Bottom surface view of the mandibular prosthesis.



13.14. Patient's smile.



14. Patient's smile.



15. Panoramic X-ray at the end of treatment.

Conclusion

The use of Axiom® TL (Tissue Level) implants is advantageous for patients with very aggressive periodontal micro flora. Working with Axiom® TL (Tissue Level) implants offers two main advantages: they don't need any prosthetic manipulation and the epithelial attachment is not damaged. Additionally, thanks to the integrated locks in the prosthesis, screw loss is impossible and the inLink® connection offers the opportunity to angulate the screw channels.