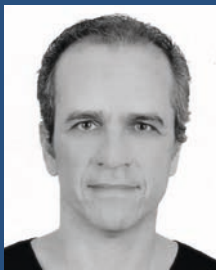


## 2. Rehabilitation of a posterior maxilla with Axiom® BL (Bone

### Case study

A **51-year-old** patient presenting with tooth 26 missing and teeth 24 and 25 badly deteriorated. The 3 Axiom® BL (Bone Level) implants PX were placed at the same time as the surgical extraction of the roots of 24 and 25 and the lateral sinus lift procedure. After 6 months of osseointegration, the 3 implants were uncovered and 6 weeks later, the healing screws were replaced with inLink® abutments. A screw-retained prosthesis was placed 4 weeks later.



### Dr Reda BEN KIRAN

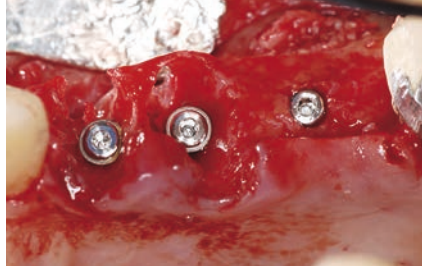
- Private practice in Cannes, limited to implantology and prosthetic dentistry
- Former university-hospital assistant
- CAGS at TUFTS University, Boston
- Certificate of Competency in implantology DGIO-AFI



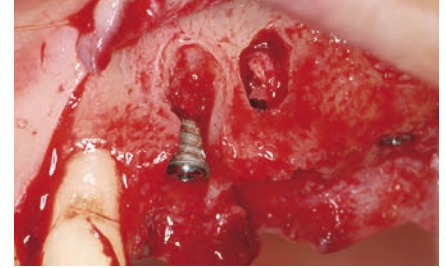
### Mr Jean-Pierre CASU

*Awarded best dental technician in France*

Kosmeteeth dental lab



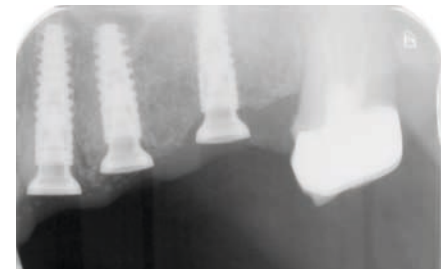
1. Placement of Axiom® BL (Bone Level) implants/PX in post-extraction and during lateral sinus lift.



2. Bone loss in the vestibular area.



6. Placement of inLink® abutments (2.5 mm gingival height and 4.8 mm platform ø).



7. X-ray of inLink® abutments on the day of their placement.



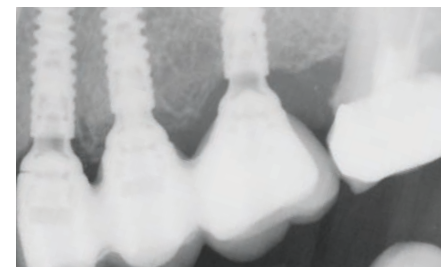
11. Final prosthesis ready for a first fitting.



12.13. Final prosthesis, a guiding fixation lock was placed centrally to aid placement of the prosthesis.



16. Occlusal view of the final prosthesis, screw channels closed.



17. Post-prosthetic X-ray.



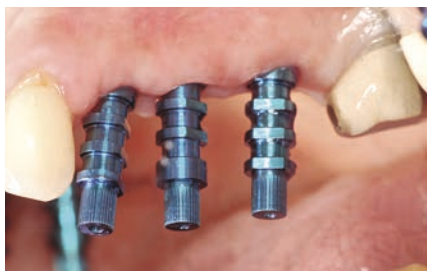
3. Bone filling.



4. 6 months later, during uncovering.



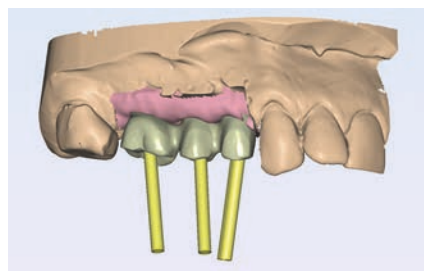
5. Uncovering of implants and placement of compact healing screws.



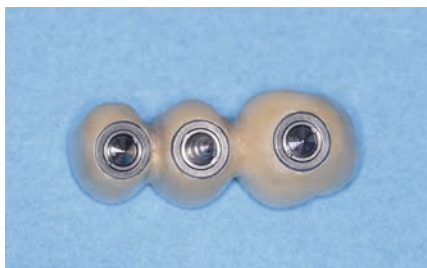
8. Transfers in place during the impression.



9. Positioning the analogues in the impression.



10. CAD model of the Simeda® prosthesis, with 25° axis adaptation in 14. The screw channel was centered in the middle of the occlusal side of 14.



13. Final prosthesis and inLink® integrated lock system.



14. Placement of the final prosthesis simplified by the absence of screws.



15. Vestibular view of the final prosthesis in the mouth.



18. Removal of the prosthesis 6 weeks after placement. Excellent gum quality.

## Conclusion

As bone filling was necessary when the implants were placed, the use of Axiom® BL implants, Bone Level was preferred to perform a 2 stage surgery. The compact design of the healing screws placed before

the permanent prosthesis and the easy prosthetic stage thanks to the inLink® integrated lock system have been particularly appreciated.

The aesthetic result is very satisfactory.